

CHESELL/EUROTHERM

CHESELL MODEL 390, 392 & 394 10" CIRCULAR CHART

PRODUCT GROUP: CCS/0010

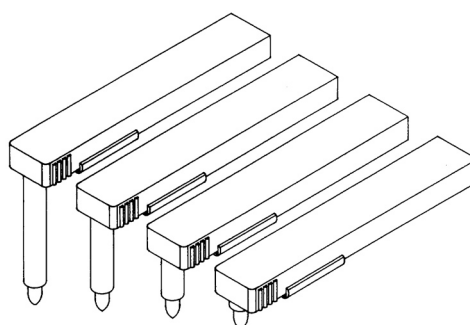
OEM PART #	ORDER REF	PRINTED	ROTATION	QTY/ PKG.	RANGE / DESCRIPTION
GD239348U100	0033470	ONE SIDE	24HR	100	0-100 LINEAR

MANY OTHER CHARTS AVAILABLE FOR THIS RECORDER, PLEASE ENQUIRE

MODEL 390 DISPOSABLE FIBRE TIPPED PENS

PRODUCT GROUP: UD23

OEM PART #	ORDER REF	COLOUR	QTY/ PKG.
LA203191	1009638	BLUE	5
LA203192	1009659	RED	5
LA203193	1009664	GREEN	5
LA203194	1009678	BLACK	5



MODELS 300, 301 CHARTS

PRODUCT GROUP: RCS/0120 (ROLLS) PCS/0120 (Z-FOLD)

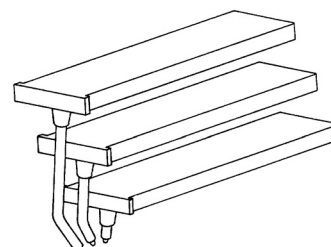
OEM PART #	ORDER REF	TYPE	UNIT LENGTH	CHART WIDTH	QTY/ PKG.	RANGE / DESCRIPTION
20003	0005013	ROLL	1 x 15m	120mm	1 ROLL	NO RANGE, 50 DIVISION
20047	0005121	ROLL	1 x 15m	120mm	1 ROLL	0-100 LINEAR
20003Z	0005019	Z-FOLD	2 x 8m	120mm	2 PACKS	NO RANGE, 50 DIVISION

MANY OTHER CHARTS AVAILABLE FOR THIS RECORDER, PLEASE ENQUIRE

300, 301 DISPOSABLE FIBRE TIPPED PENS

PRODUCT GROUP: MT24

OEM PART #	ORDER REF	COLOUR	QTY/ PKG.
LA125451	0068259	BLUE	3
LA125452	0049628	RED	3
LA125453	0049629	GREEN	3
LA126851	0052602	RED	3
LA126852	0052997	BLUE	3



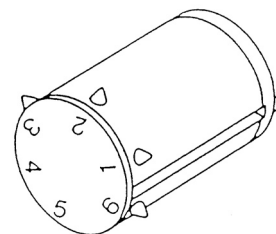
FOR OTHER RECORDER MODELS OR NON-STANDARD CHARTS PLEASE ENQUIRE

CHESELL/EUROTHERM

MODEL 306 PRINT WHEEL

PRODUCT GROUP: 6PW01

OEM PART #	ORDER REF	COLOUR	QTY/ PKG.
LA128969	0034864	6 COLOUR VIOLET RED BLACK GREEN BLUE BROWN	1



MODELS 320 & 321 STRIP CHARTS

PRODUCT GROUP: RCS/0270 (ROLLS) PCS/0270 (Z-FOLDS)

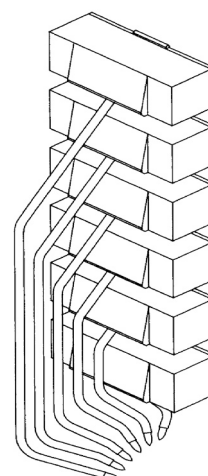
OEM PART #	ORDER REF	TYPE	UNIT LENGTH	CHART WIDTH	QTY/ PKG.	RANGE / DESCRIPTION
10-22800-R/140	0004844	ROLL	1 x20m	270mm	1 ROLL	NO RANGE 140 DIVS
10-22800/120	0004818	ROLL	1 x20m	270mm	1 ROLL	NO RANGE 120 DIVS
10-22801-Z/100	0004922	Z-FOLD	1 x20m	270mm	1 PACK	NO RANGE 100 DIVS

MANY OTHER CHARTS AVAILABLE FOR THIS RECORDER, PLEASE ENQUIRE

MODELS 320 FIBRE TIPPED PENS

PRODUCT GROUP: MT63

OEM PART #	ORDER REF	COLOUR	QTY/ PKG.
LA128961	0049679	GREEN	1
LA128962	0049682	RED	1
LA128963	0049683	BLUE	1
LA128964	0049684	NOIR	1
LA128965	0049685	VIOLET	1
LA128966	0049686	BROWN	1



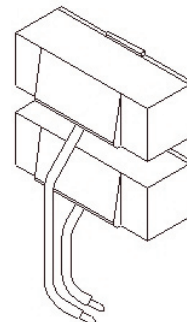
FOR OTHER RECORDER MODELS OR NON-STANDARD CHARTS PLEASE ENQUIRE

CHESELL/EUROTHERM

MODELS 321 FIBRE TIPPED PENS

PRODUCT GROUP: MT637-8

OEM PART #	ORDER REF	COLOUR	QTY/ PKG.
LA234423	0066150	GREEN	1
LA234424	0072380	BLUE	1
LA234425	0049687	RED	1



MODELS 340, 342, 344, 345 & 346 STRIP CHARTS

PRODUCT GROUP: RCS/0122 (ROLLS) PCS/0121 (Z-FOLD)

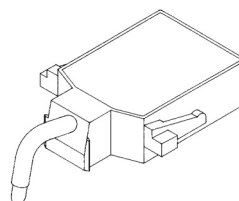
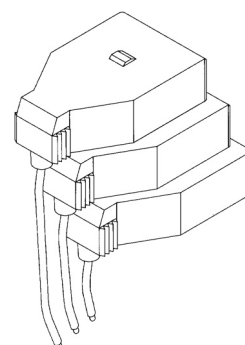
OEM PART #	ORDER REF	TYPE	UNIT LENGTH	CHART WIDTH	QTY/ PKG.	RANGE / DESCRIPTION
GD128971U030	0068822	ROLL	1 x 32m	120mm	1 ROLL	NO RANGE, 30 DIVISION
GD128970U100	0033097	Z-FOLD	1 x 16m	120mm	2 PACKS	NO RANGE, 100 DIVISION

MANY OTHER CHARTS AVAILABLE FOR THIS RECORDER, PLEASE ENQUIRE

MODELS 340, 342, 344 & 345 FIBRE TIPPED PENS

PRODUCT GROUP: MT91 & MT91A

OEM PART #	ORDER REF	COLOUR	QTY/ PKG.
LA243771	0064925	BLUE	1
LA243772	0064926	RED	1
LA243773	0064927	GREEN	1
LA243770	0064924	VIOLET	1



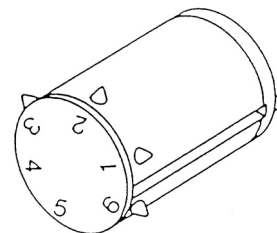
FOR OTHER RECORDER MODELS OR NON-STANDARD CHARTS PLEASE ENQUIRE

CHESELL/EUROTHERM

MODEL 346 PRINT WHEEL

PRODUCT GROUP: 6PW01

OEM PART #	ORDER REF	COLOUR	QTY/ PKG.
LA128969	0034864	6 COLOUR VIOLET RED BLACK GREEN BLUE BROWN	1



MODEL 4001 MULTIPOINT DATA STRIP CHART

PRODUCT GROUP: RCS/0272 (ROLLS)

OEM PART #	ORDER REF	TYPE	UNIT LENGTH	CHART WIDTH	QTY/ PKG.	RANGE / DESCRIPTION
GD236721U100	0033118	ROLL	1 x 35m	270mm	1 ROLL	NO RANGE, 100 DIVISION

MANY OTHER CHARTS AVAILABLE FOR THIS RECORDER, PLEASE ENQUIRE

MODEL 4001 RIBBON CARTRIDGE

PRODUCT GROUP: 64-11-600V-01

OEM PART #	ORDER REF	COLOUR	QTY/ PKG.
LA232380	0066280	6 COLOUR VIOLET RED BLACK GREEN BLUE ORANGE	1

FOR OTHER RECORDER MODELS OR NON-STANDARD CHARTS PLEASE ENQUIRE

CHESELL/EUROTHERM

MODELS 4104, 4102 & 4103 STRIP CHARTS

PRODUCT GROUP: RCS/0122 (ROLLS) PCS/0121 (Z-FOLD)

OEM PART #	ORDER REF	TYPE	UNIT LENGTH	CHART WIDTH	QTY/ PKG.	RANGE / DESCRIPTION
GD128971U050	0033101	ROLL	1 x 32m	120mm	1 ROLL	NO RANGE, 50 DIVISION
GD128970U050	0033093	Z-FOLD	1 x 16m	120mm	2 PACKS	NO RANGE, 50 DIVISION

MANY OTHER CHARTS AVAILABLE FOR THIS RECORDER, PLEASE ENQUIRE

MODEL 4101M, 4102M & 4103M PRINTHEAD

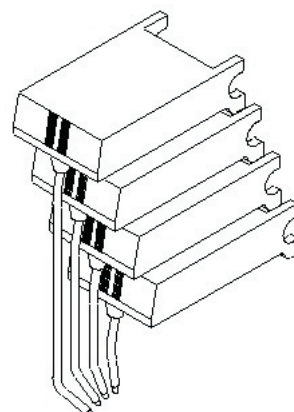
PRODUCT GROUP: 6PH01

OEM PART #	ORDER REF	COLOUR	QTY/ PKG.
LA249556	0082124	6 COLOUR VIOLET RED BLACK GREEN BLUE ORANGE	1

MODELS 4101C, 4102C & 4103C FIBRE TIPPED PENS

PRODUCT GROUP: MX16

OEM PART #	ORDER REF	COLOUR	QTY/ PKG.
LA249554	0082547	VIOLET	1
LA249553	0082546	GREEN	1
LA249552	0082545	RED	1
LA249551	0082544	BLUE	1



MODEL 4180M MULTIPOINT DATA STRIP CHART

PRODUCT GROUP: CHL316 (Z-FOLD)

OEM PART #	ORDER REF	TYPE	UNIT LENGTH	CHART WIDTH	QTY/ PKG.	RANGE / DESCRIPTION
GD248010U100	2020097	Z-FOLD	1 x 22m	224mm	1 PACK	NO RANGE, 100 DIVISION

MANY OTHER CHARTS AVAILABLE FOR THIS RECORDER, PLEASE ENQUIRE

FOR OTHER RECORDER MODELS OR NON-STANDARD CHARTS PLEASE ENQUIRE

CHESELL/EUROTHERM

MODEL 4180M PRINTHEAD

OEM PART #	ORDER REF	COLOUR	QTY/ PKG.
LA248163	0077163	6 COLOUR VIOLET RED BLACK GREEN BLUE BROWN	1

MODELS 4200 STRIP CHARTS

PRODUCT GROUP: RCS/0275 (ROLLS) PCS/0275 (Z-FOLD)

OEM PART #	ORDER REF	TYPE	UNIT LENGTH	CHART WIDTH	QTY/ PKG.	RANGE / DESCRIPTION
GD244109U100	0068825	ROLL	1 x 32m	275mm	1 ROLL	NO RANGE, 100 DIVISION
GD244101U100	0067040	Z-FOLD	1 x 22m	275mm	1 PACK	NO RANGE, 100 DIVISION

MANY OTHER CHARTS AVAILABLE FOR THIS RECORDER, PLEASE ENQUIRE

MODEL 4200 RIBBON CARTRIDGE

OEM PART #	ORDER REF	COLOUR	QTY/ PKG.
LA243101	0077329	6 COLOUR RIBBON CARTRIDGE BLACK RED ORANGE GREEN BLUE VIOLET	1

FOR OTHER RECORDER MODELS OR NON-STANDARD CHARTS PLEASE ENQUIRE

CHESELL/EUROTHERM

MODELS 4250 STRIP CHARTS

PRODUCT GROUP: RCS/0275 (ROLLS) PCS/0275 (Z-FOLD)

OEM PART #	ORDER REF	TYPE	UNIT LENGTH	CHART WIDTH	QTY/ PKG.	RANGE / DESCRIPTION
GD244109U100	0068825	ROLL	1 x 32m	275mm	1 ROLL	NO RANGE, 100 DIVISION
GD244101U100	0067040	Z-FOLD	1 x 22m	275mm	1 PACK	NO RANGE, 100 DIVISION

MANY OTHER CHARTS AVAILABLE FOR THIS RECORDER, PLEASE ENQUIRE

MODEL 4250M RIBBON CARTRIDGE

OEM PART #	ORDER REF	COLOUR	QTY/ PKG.
LA243101	0077329	6 COLOUR RIBBON CARTRIDGE BLACK RED ORANGE GREEN BLUE VIOLET	1

MODEL 4250C FIBRE TIPPED PENS

PRODUCT GROUP: MX17 & MT91A

OEM PART #	ORDER REF	COLOUR	QTY/ PKG.
LA244371	1011207	GREEN	1
LA244372	1011208	RED	1
LA244373	1011209	BLUE	1
LA244374	1011210	BLACK	1
LA243770	0064924	VIOLET	1

FOR OTHER RECORDER MODELS OR NON-STANDARD CHARTS PLEASE ENQUIRE